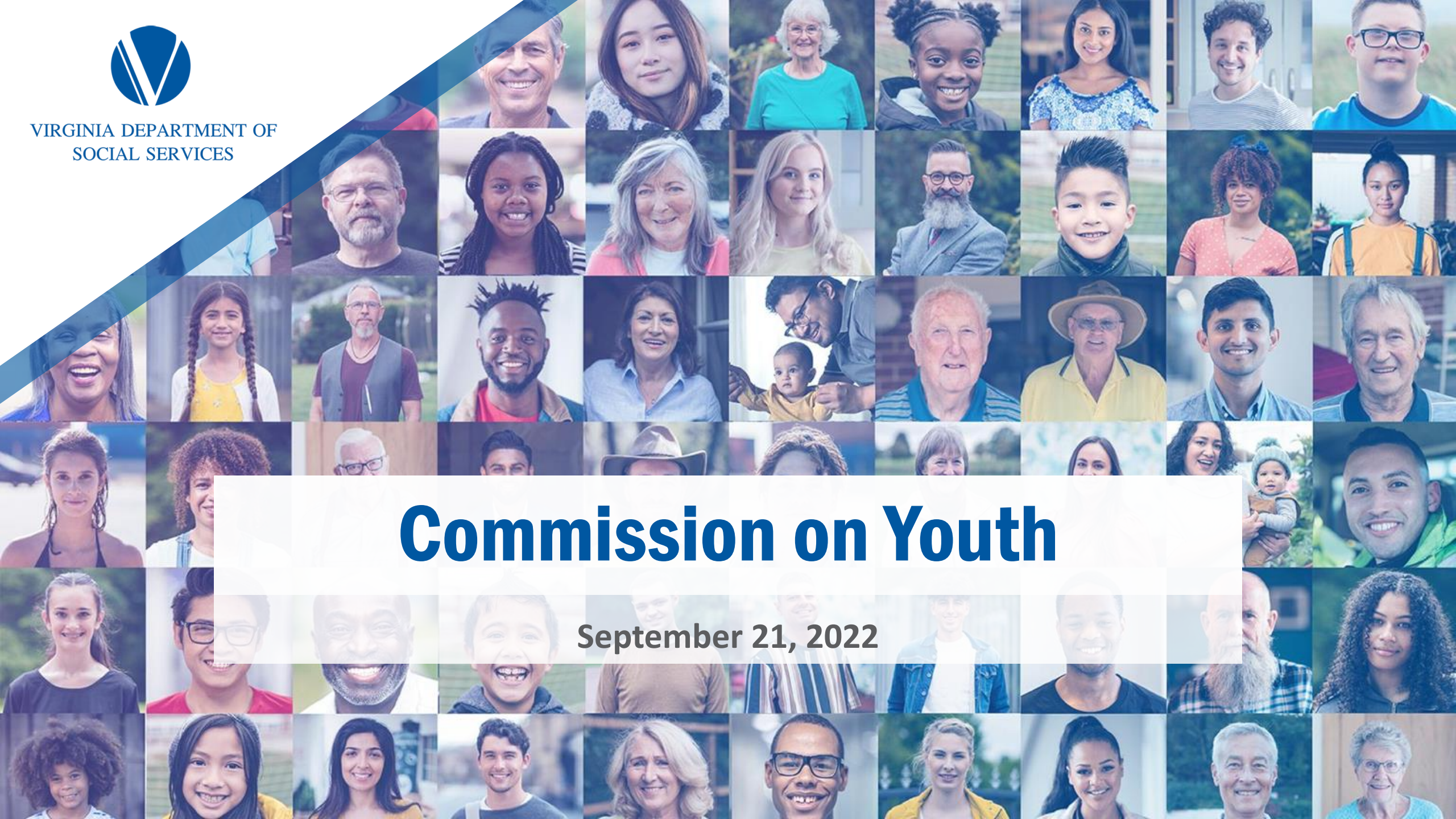




VIRGINIA DEPARTMENT OF
SOCIAL SERVICES

Commission on Youth

September 21, 2022

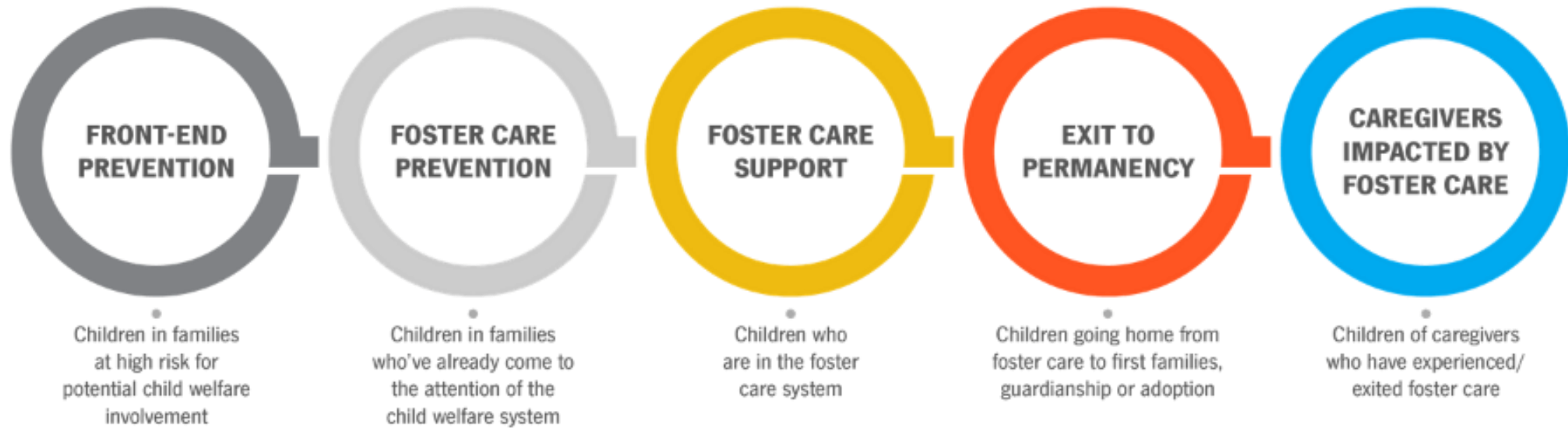




Moving Upstream In Child Welfare

Virginia's Family First and In-home Alignment





Family First

The **vision** for Family First is to **keep children safe, strengthen families** and **reduce the need for foster care** whenever it is safe to do so.



Blue Print for Family First

Increase Prevention Services

So children and families have access to resources in their community to prevent unnecessary child welfare involvement

Decrease the need for foster care

By offering evidenced based interventions to allow children to remain safely at home

Increase well-being of youth in foster care

By expanding family based foster care settings and reducing reliance on congregate care

Aligning Practices

- REDUCING REMOVALS BY INCREASING ACCESS TO AN EXPANDED ARRAY OF EVIDENCE BASED SERVICES (EBS)
- BUILDING STRONGER CASEWORK PRACTICES AND GUIDANCE TO MAXIMIZE THE BENEFIT OF FAMILIES FIRST
- ENHANCING OASIS AND CQI/DATA TO SUPPORT FAMILY FIRST ACT REQUIREMENTS

In-Home Practice

CPS Ongoing Practice

Prevention Practice

Family First Legislation

Center for Evidence-Based Partnerships (CEPVa)



Virginia's Evidence Based Services

Title IV-E Prevention Services Clearinghouse

Virginia Prevention Plan

Multisystemic
Therapy
(MST)

Functional
Family Therapy
(FFT)

Parent Child
Interaction
Therapy
(PCIT)

Brief Strategic
Family Therapy
(BFST)

High Fidelity
Wraparound

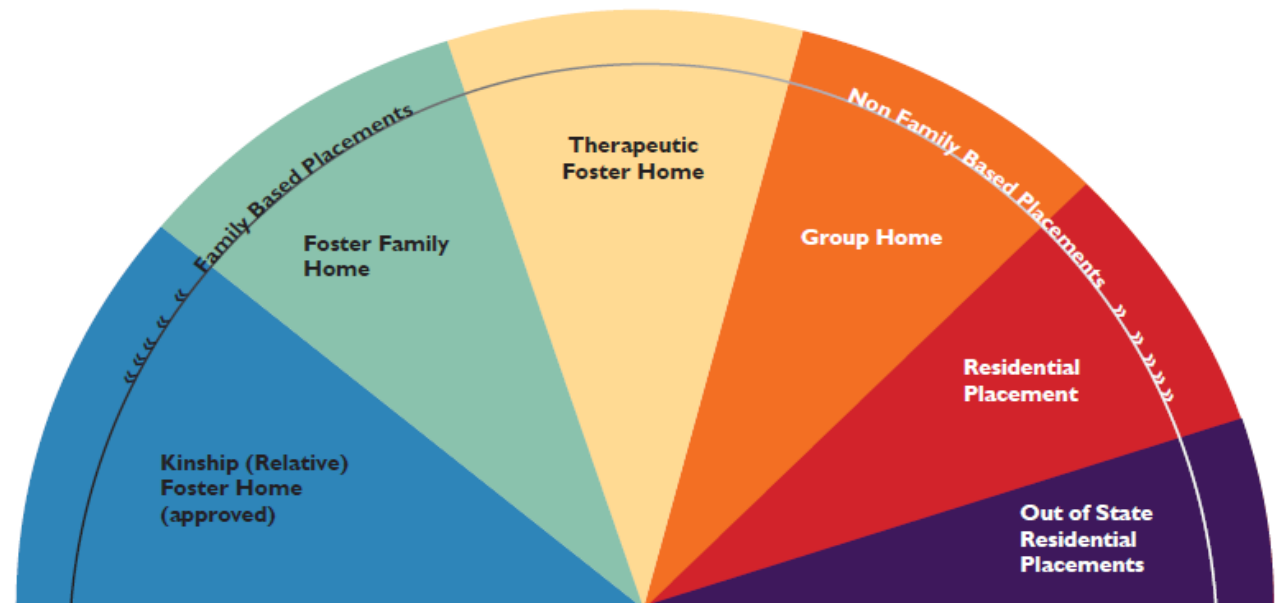
Motivational
Interviewing
(MI)

Homebuilders

Family Check
Up

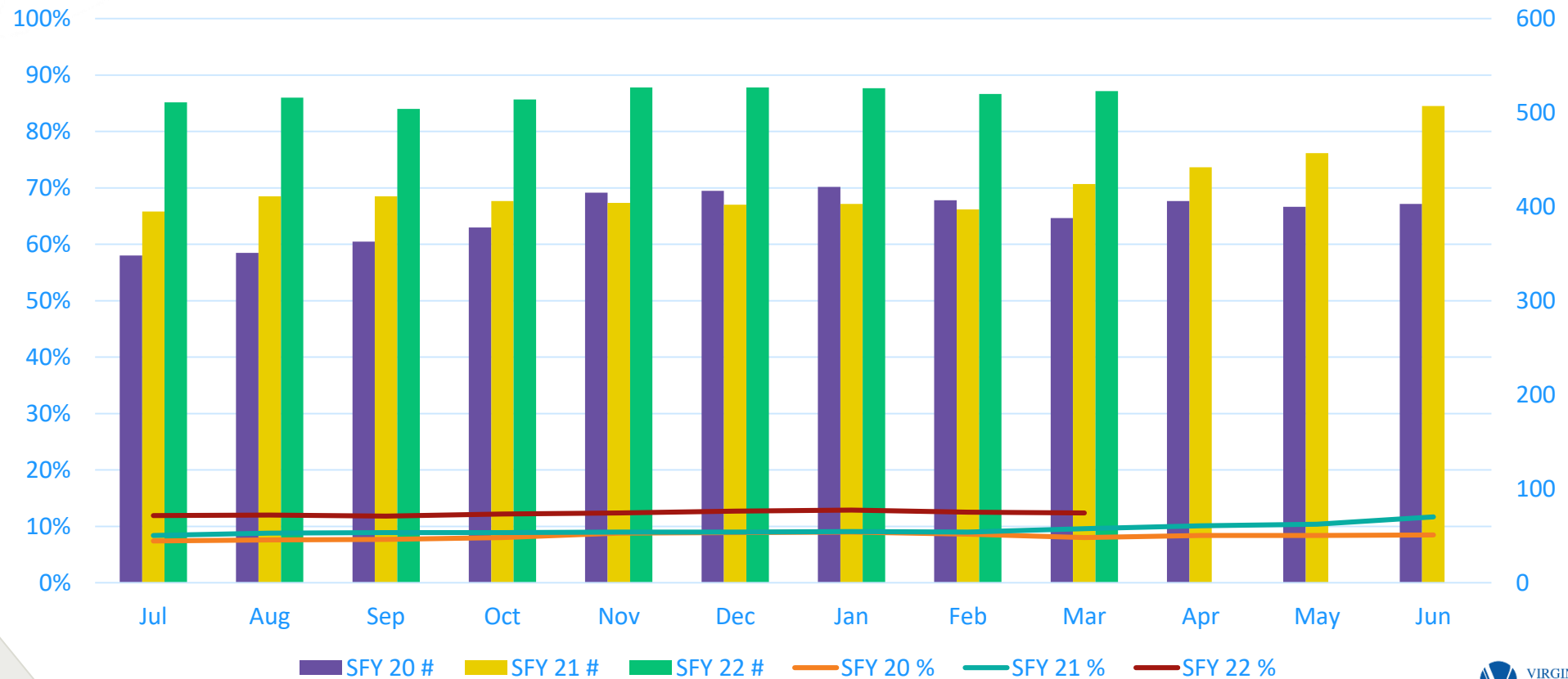
Family First- Foster Care Focus

- ✓ Increase kin/fictive kin placements
- ✓ Increase family-based placements
- ✓ Decrease use of congregate care

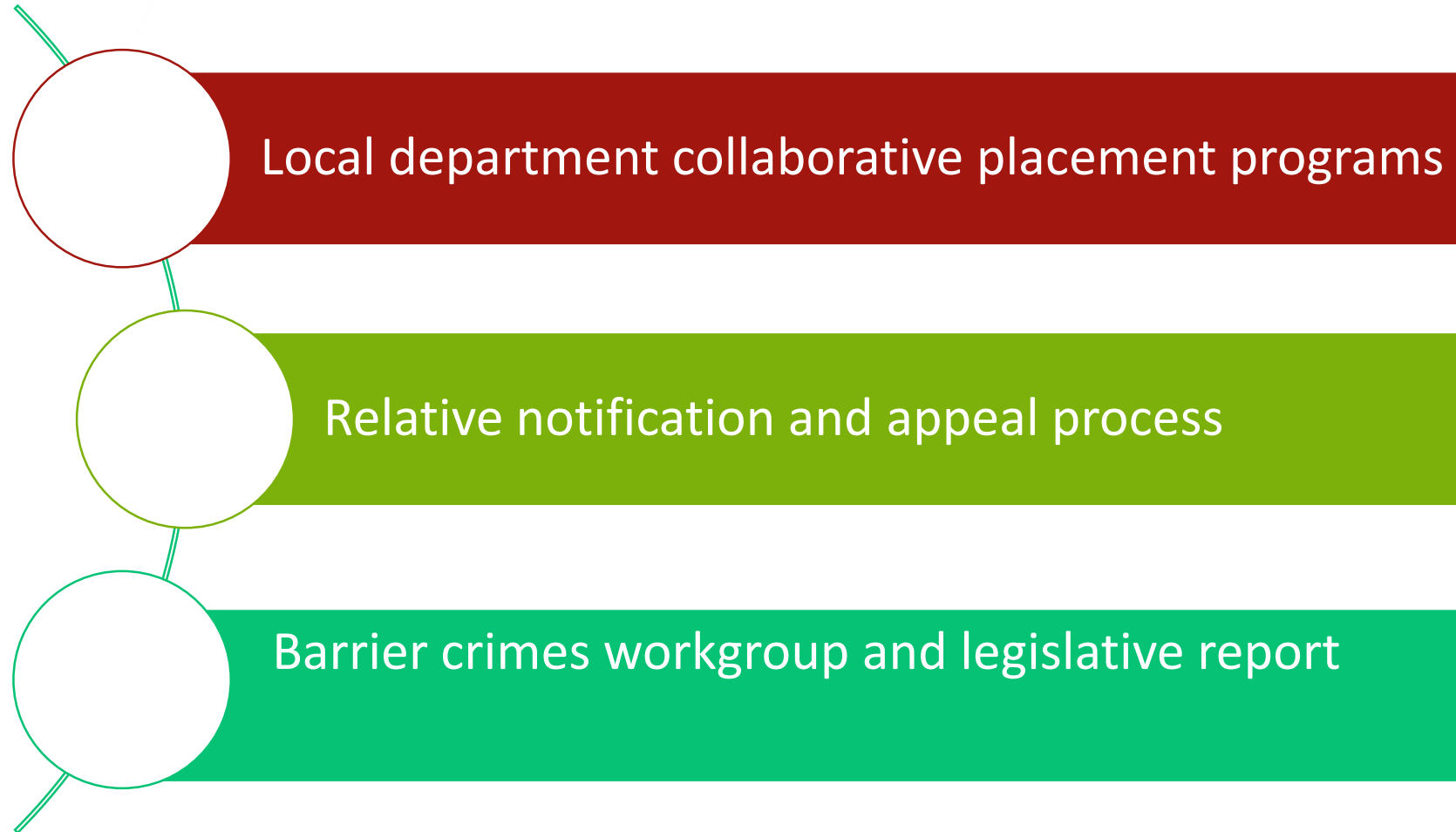


Children in FC Placed with Relative/Fictive Kin

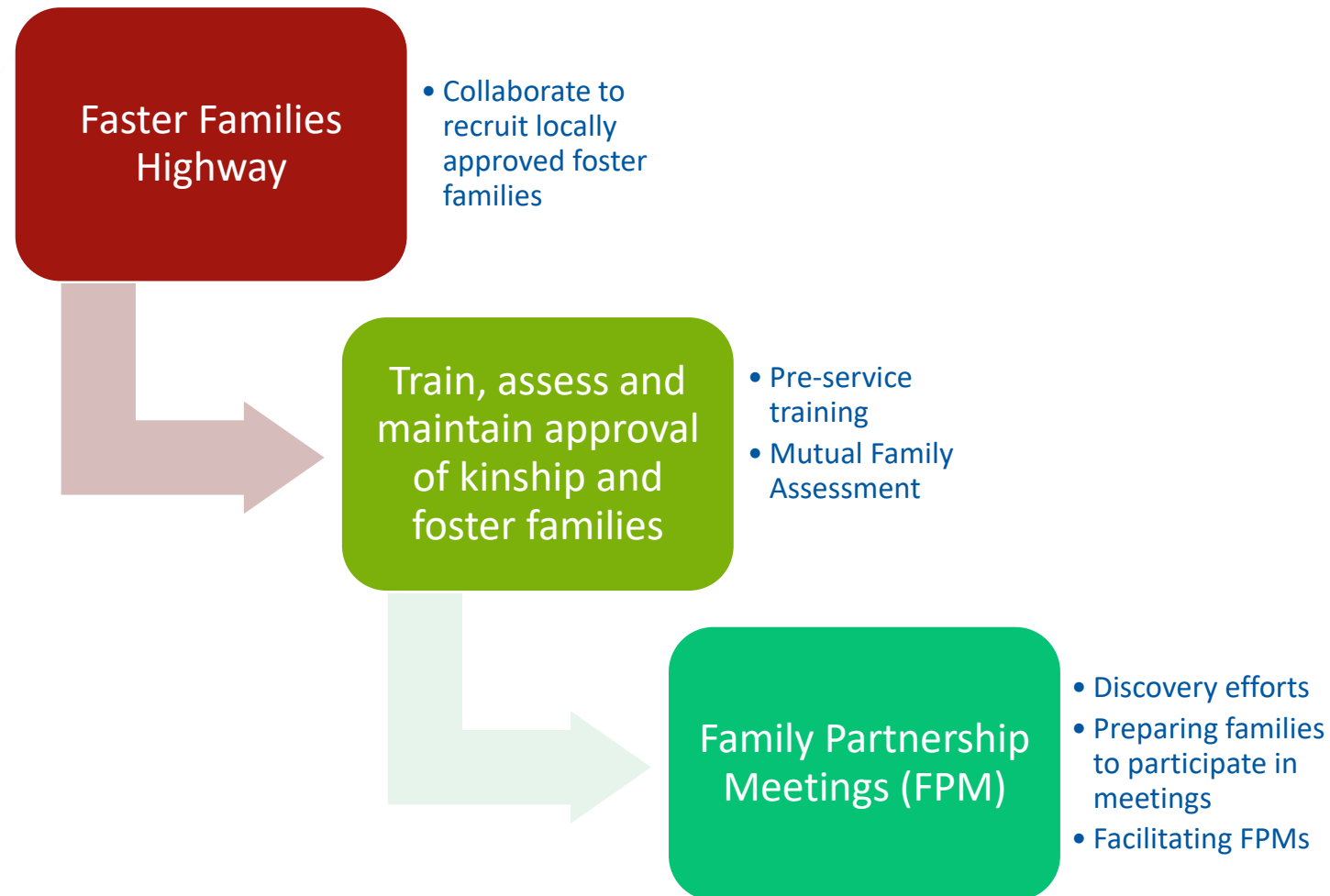
Percentage and Number of Children Placed with Relative/Fictive Kin (under 18)



Improving access to kinship and family based placements



Local Department Collaborative Placement Programs





Thank you



VIRGINIA DEPARTMENT OF
SOCIAL SERVICES

